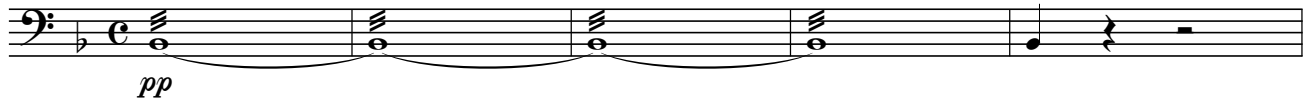



A SUNNY SUMMERDAY

Dolce ♩ = ca. 74
[G | Bb]



pp

[Bb to C] **A**



mp *mf*

[G to F] *rit.* **B** With energy ♩ = ca. 110
(Optional start *without chord in I - V*)



mf

C

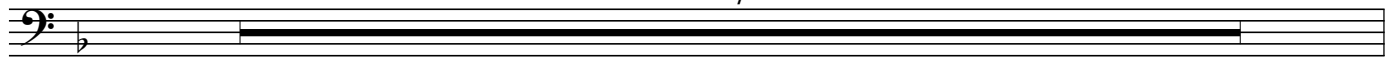


D



[F to G]

7



E



mf

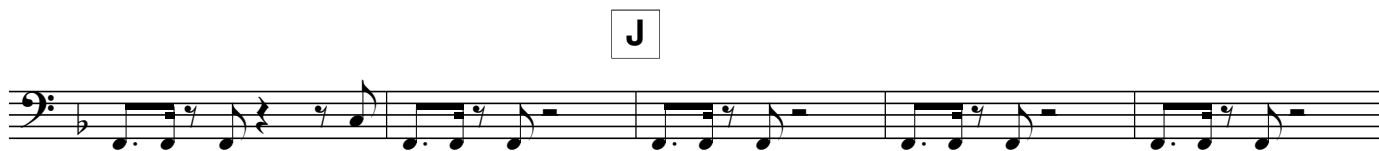
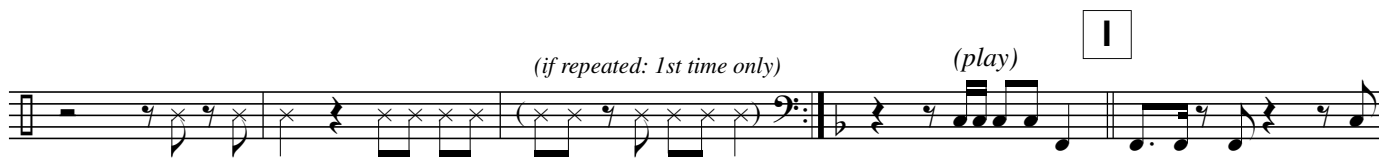
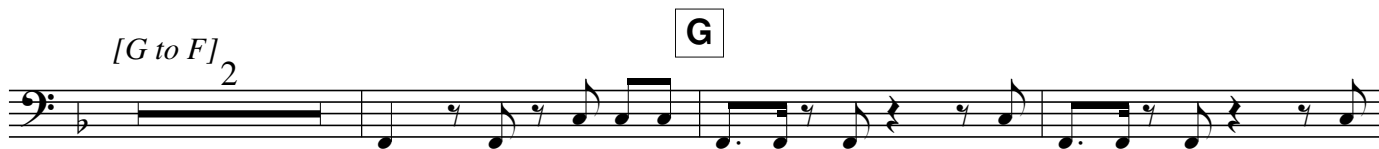
F



2

A Sunny Summerday

Timpani



A SUNNY SUMMERDAY

Dolce ♩ = ca. 74

A

B

With energy ♩ = ca. 110
(Optional start without chord in I - V)



Musical notation for sections A and B. Section A consists of two measures of a whole note chord, each with a '6' above it. Section B consists of one measure of a whole note chord with a '4' above it. The key signature has one flat (Bb).

C



Musical notation for section C, starting with a dynamic marking of *f*. It consists of two measures of eighth notes: G4, F4, E4, D4, C4, B3, A3, G3.



Musical notation for section C, continuing from the previous line. It consists of two measures of eighth notes: F4, E4, D4, C4, B3, A3, G3, F3.

D



Musical notation for section D, starting with a dynamic marking of *mf*. It consists of two measures of eighth notes: E4, D4, C4, B3, A3, G3, F3, E3.



Musical notation for section D, continuing from the previous line. It consists of two measures of eighth notes: D4, C4, B3, A3, G3, F3, E3, D3.

E



Musical notation for section E, consisting of four measures of eighth notes: C4, B3, A3, G3, F3, E3, D3, C3.



Musical notation for section E, continuing from the previous line. It consists of four measures of eighth notes: B3, A3, G3, F3, E3, D3, C3, B2.

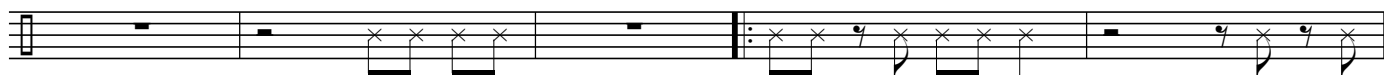
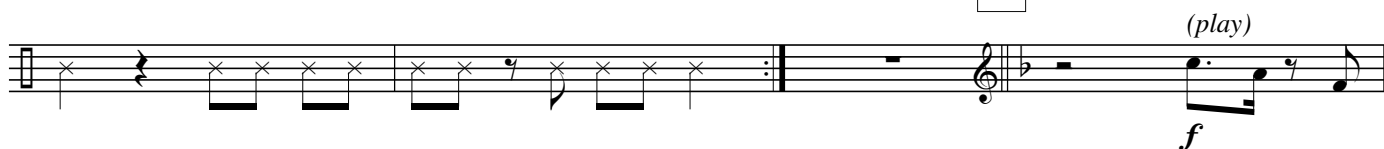
F



Musical notation for section F, consisting of four measures of eighth notes: A3, G3, F3, E3, D3, C3, B2, A2.

A Sunny Summerday

Xylophone

**G****H***Play on a couple of large tent pegs***(Optional repeat)****I****J**

Percussion

A SUNNY SUMMERDAY

Wilco Moerman

Dolce ♩ = ca. 74

5 Windchimes **A** 2

mf rit. S.C. w. mallets **B** With energy ♩ = ca. 110 (Optional start without chord in I - V) *mf*

2 *pp* *mf*

Bongo's *mf*

D 8 **E** 8 **F** Shaker *mp*

G Bongo's *mf*

H 3

(Optional repeat)
(if repeated: 2nd time only)

I

J

Windchimes 3 Windchimes Bongo's *f*

A SUNNY SUMMERDAY

Dolce ♩ = ca. 74

4

Susp. Cymb. w. mallets

A

ppp ————— *mf*

With energy ♩ = ca. 110

B (Optional start *without chord in I - V*)

3 (H.H.)

pp ————— *mf*

C

D

E *Low toms*

(H.H. foot)

F

A Sunny Summerday

Drums

Staff 1: Musical notation with rhythmic patterns and rests.

Staff 2: Musical notation with rhythmic patterns and a box labeled 'G' above the staff.

Staff 3: Musical notation with rhythmic patterns.

Staff 4: Musical notation with rhythmic patterns and a box labeled 'H' above the staff.

(Optional repeat)

Staff 5: Musical notation with rhythmic patterns and repeat signs.

Staff 6: Musical notation with rhythmic patterns and a box labeled 'I' above the staff. Below the staff, the text "Floortom + BD" is written.

Staff 7: Musical notation with rhythmic patterns.

Staff 8: Musical notation with rhythmic patterns and a box labeled 'J' above the staff.

Susp. Cymb. w. mallets

Staff 9: Musical notation with dynamic markings *pp* and *f*, and a box labeled 'Drums' above the staff.